

Model 500E



The Air+ Model 500E is a five tube ionizer that produces positive and negative ions to improve air quality. A six position Ion Control Knob allows for ion output between 50 and 100%. The unit may be either mounted on a metal supply duct or installed inside an HVAC unit. Using the pre-drilled flange and sheet metal screws, the Model 500E mounts into a duct cutout. A separate mounting bracket or rack is required for HVAC unit installation. The Model 500E is available with either 115V or 230V AC power input. Power to the unit may be interlocked directly with the system fan by using an air flow switch, pressure switch, or HVAC unit door switch. A low voltage connection provides for remote monitoring of the Model 500E.

- Air Flow Capacity: Up to 8,000 CFM
- Pressure Drop: See Figure 1
- Electrical:
 - Voltage: 115V (501E) or 230V (502E)
 - Power Consumption: 35 watts
 - Current Draw: 0.3A (501E) or 0.15A (502E)
 - Frequency: 50/60 hertz
 - External Fuse: 1.0A
 - Field Connection: 3/8" flexible metal conduit (BX) or SO Cord

- Ionization Tube:
 - Number of Tubes: Five (5)
 - Material: Glass, stainless steel
 - Size: E-tube
 - Length: 14 inches
 - Life: 17,600* hours
 - Housing Material: 22 ga steel
 - Weight: 15 pounds
 - Maximum Operating Temp: 200° F (93° C)
- *dependent on pollutant, filtration and tube maintenance

- Dimensions: See Figure 2
- Optional Accessory: Pressure Switch

FIGURE 1: PRESSURE DROP VS. DUCT VELOCITY

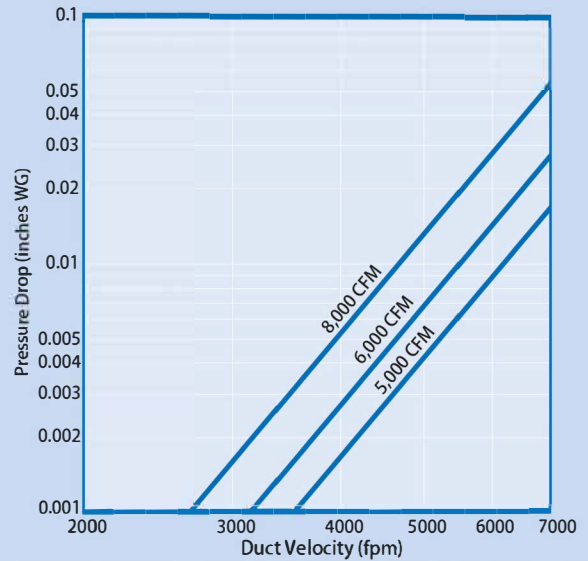
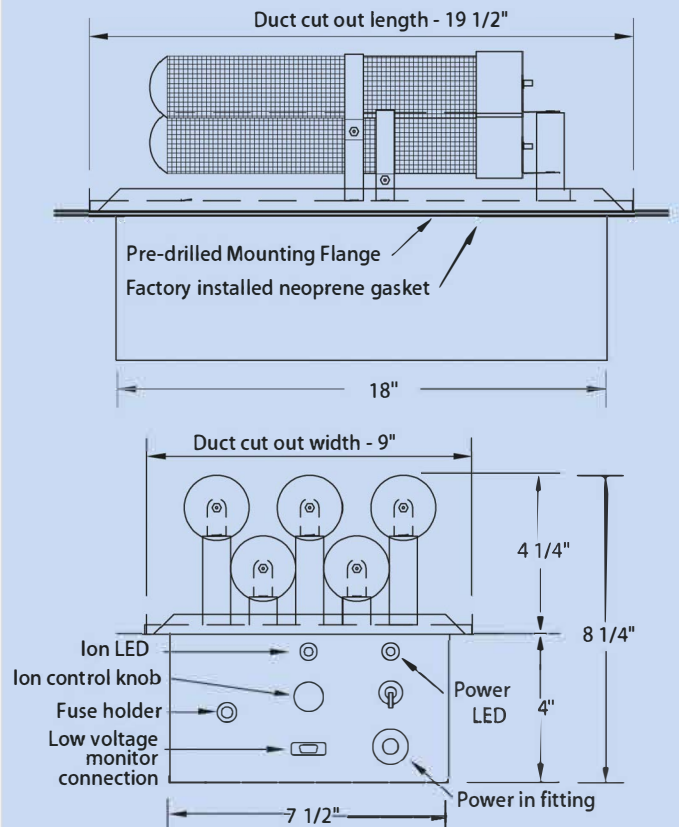


FIGURE 2: DIMENSIONS



NOT TO SCALE

© 2023 All rights reserved

